




Nightingale
Care Home

the **gold standards**
framework



Nightingale Care Home

— Luxury Residential Care Home for the Elderly —

Welcome

to Nightingale

Thank you for your enquiry regarding Nightingale Care Home. Our goal is to provide each of our residents with the very best facilities and care in beautiful and comfortable surroundings. We aim to promote individuality and independence, and encourage our residents to exercise choice in all aspects of their care.

We hope you find this brochure useful, whilst you make this important decision for yourself or your relative.

We invite you to visit Nightingale to meet our dedicated and highly trained staff, view our facilities and feel the warm and caring atmosphere. You may visit at any time, but if you call beforehand, we can arrange an appointment with either myself or another senior member of the care team.

If you have any queries, or would like any further information, please do not hesitate to contact me.

Thank you for your interest and I look forward to meeting you,

Yours Sincerely,

Julie Wright
Manager



Your Home

Nightingale is a luxury, modern and tastefully decorated, purpose built care and dementia home registered to provide long and short term accommodation and care for up to 40 residents. We aim to provide first rate facilities and care in beautiful and comfortable surroundings.



Bedrooms

All of our bedrooms are single occupancy and most boast the following features:

- Ensuite with toilet and hand basin
- Bright, spacious & attractively furnished
- Cleaned daily
- Outside views
- Digital television point
- Telephone point
- Fitted lock
- High- tech nurse call system

You are welcome to choose your bedroom from those available and you are invited to add your own personal effects including pictures and furniture, to make the room feel familiar and reassuring. Arrangements can be made to accommodate couples wishing to share a room.



Lounges

You can relax in our plush, restful and stylishly arranged sitting room. The display of lovely pictures, ornaments and flower arrangements add to the inviting and homely feel. The large windows and doors offer you a magnificent, panoramic view of the charming landscaped garden. A large flat screen television and library of books provide recreation and entertainment.



Dining Areas

Our well-appointed dining areas are spacious and smartly arranged in restaurant style, so you can choose to dine with family or friends, or alone if you prefer. The dining room has recently been refurbished to a high standard and has large windows which allow you to delight in the picturesque outdoors in all seasons.



My mum has taken some setting in due to symptoms of her Alzheimer's but the staff have gone above and beyond to make her feel at home. There is always something happening to keep her occupied and there are plenty of places to sit and have a chat with her. I was upset when my mum had to go into a care home but I definitely feel we picked the best one!

Daughter of Resident | October 2024



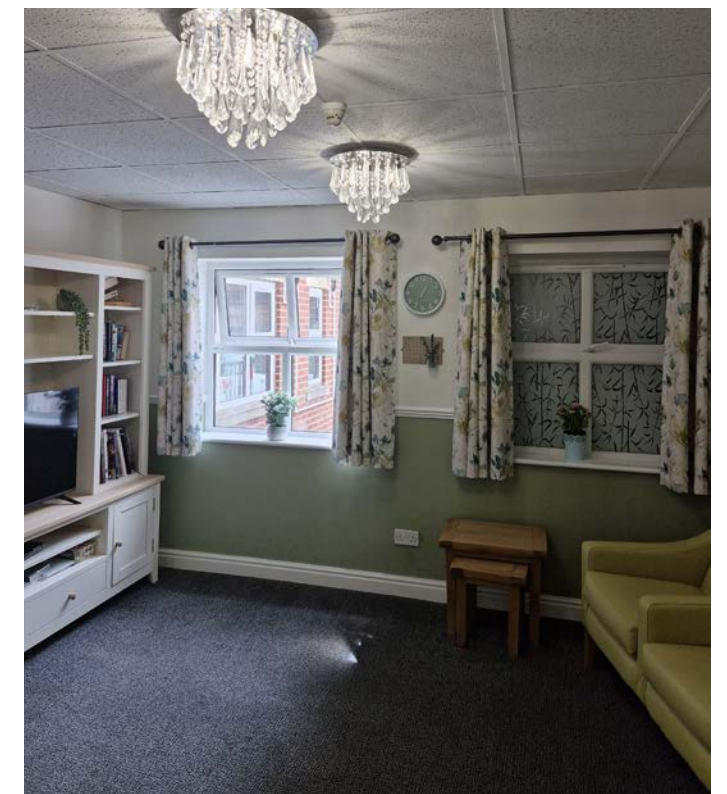
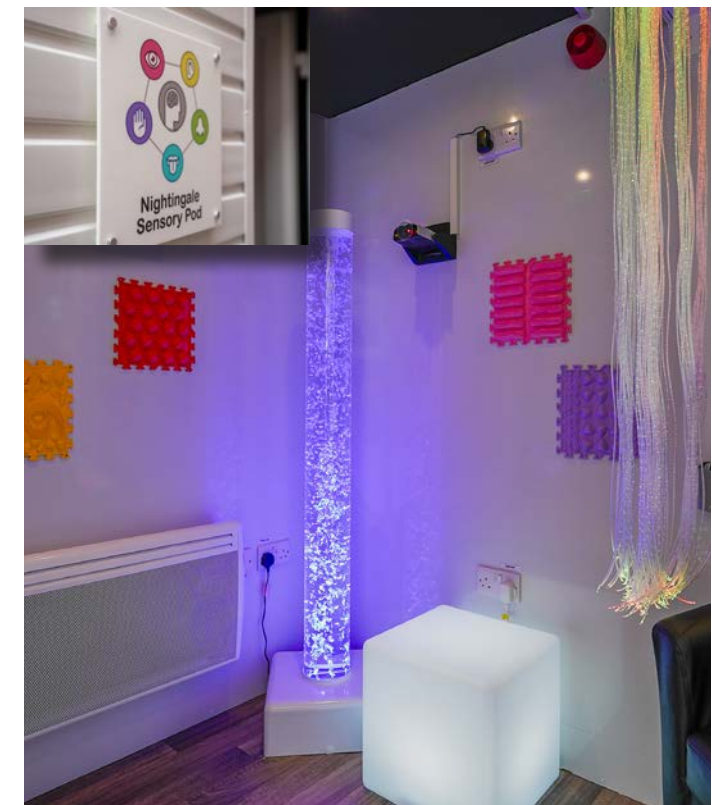
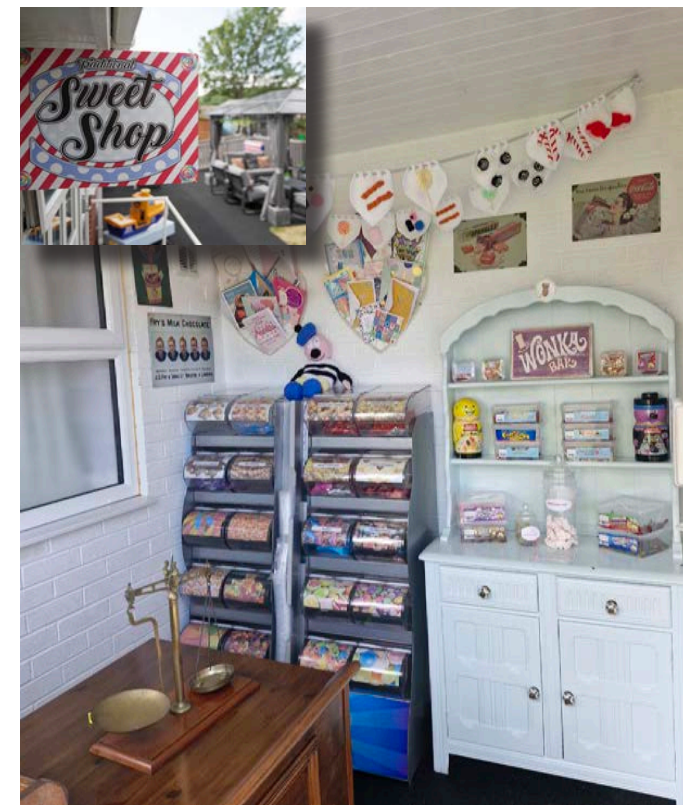
Landscaped Garden

At the rear of the home is a beautiful quarter acre landscaped garden. A vast lawn, numerous trees, shrubs, and gorgeous flowers are regularly tended by our skilled gardener. In all seasons, the grounds are kept neat and pretty and provide scenic and peaceful surroundings. A large Patio area with generous seating and shade, Sweet Shop, Pub, Cafe and Amusement Arcade can all be accessed from here.



Communal Areas

All the communal areas of Nightingale are bright and spacious, spotlessly clean and attractively decorated. A maintenance person is employed to keep the home in perfect order. The home is suitably designed for easy wheelchair use. All doors are extra wide, a lift provides access to the bedrooms on the first floor and our off-street parking and garden have level-access to the home. The assisted bathroom, two shower rooms, all the en-suite bathrooms and all of the corridors are fitted with handrails.



My father-in-law has been in this home for nearly 3 years and we are so happy with the care given by all the staff. The staff are friendly and we are always made to feel welcome when visiting. He loves the singers and all the different activities that are provided. The home is so clean, I am so glad we chose this home and we wouldn't hesitate to recommend it to anyone.

Daughter-in-law of Resident | January 2025

Your Care



Nightingale is owned by Carewise Homes Group. Nightingale is run by our super-efficient, wonderfully compassionate Home Manager, Julie Wright, who effectively leads Nightingale in its quest for excellence in all areas Julie is highly respected by her staff, residents, families and visiting professionals.



Meet the Team

Our outstanding care team are also dedicated and highly qualified; most have completed NVQ levels 2 or 3. We insist on a high standard of care, so our employees are carefully selected for their qualities of reliability, integrity, skill, friendliness and professionalism. Full induction training is provided and continuing professional development is undertaken by each member of staff. Attentive and compassionate carers are available twenty four hours a day. The high staff resident ratio enables us to provide companionship and stimulation, as well as tending to your physical needs.

In addition to the Care staff, Nightingale also employs an administrator, expert cook, activity co-ordinator, domestic staff, catering and laundry assistants and a maintenance person for regular upkeep.



Health

The prime objective of our home is to promote and foster health and wellbeing. Upon your admission, an assessment of need will be performed by a senior member of the care team, from which a Care Plan will be created. You, your relatives and doctors are offered and encouraged to participate in the drafting of your Care Plan. A review will be conducted monthly, unless changes in your condition necessitate more frequent reviews. When you join the home, we recommend that you join our GP, who makes a weekly visit to Nightingale and whose regular surgery is located across the road. You can be seen at the GP Practice or at the Home. The District Nurse Team work alongside the GP and can be called on when necessary.

In case of illness, relatives will be informed immediately and updated regularly on your recovery. If family members wish to be present whilst you are ill, we will accommodate them.

In addition, you are invited to benefit from:

- Music Therapy and Chairrobics
- Manicures and Hairdressing
- Occupational Therapy
- Optician
- Chiropodist
- Physiotherapy
- Sensory Room
- Dentist



Philosophy of Care

At Nightingale, we aim to provide an exceptionally high level of care and to ensure that you are treated with utmost respect, your privacy protected and your dignity preserved. Our goal is to support individuality and independence and to encourage you to exercise choice in all aspects of your care.



With all we read in the press nowadays, I was anxious about choosing a care home for my mum, but Nightingale proved to be an excellent choice. The staff treat my mum with kindness and always attend to her needs promptly. The home has a warm, family atmosphere. It is clean and modern and I always feel welcome when I visit. My mother really enjoys the activities. I have no hesitation in recommending Nightingale.

Daughter of Resident | January 2025

Your Activities

At Nightingale, we offer you a varied and stimulating programme of entertaining activities. Our activities coordinator produces a programme that includes going out, weekly entertainers, animals visits, liaising with local schools, reminiscence, arts and crafts, bingo, relaxation, ball games, dominoes, card games and chairbics. You will be encouraged to broach new ideas at our residents meetings and your own interests and hobbies will be promoted, with staff delighted to assist you whenever necessary. A sensory room, two large flat screen televisions, daily newspapers and our small library of books will provide you with stimulation and diversion. Family members and the community are always welcome to volunteer with activities and events.



Events and Trips

Special events at Nightingale are special indeed when celebrated together. Birthdays, Christmas, Easter, Halloween and Bonfire night are all marked with joyful festivities, whilst garden parties, barbeques and theme days are planned regularly to enhance the cheerful atmosphere. Religious services are held at Nightingale and you can be taken to other religious services if you wish. Trips are organised outside the home to the cinema or theatre and tourist spots, such as the seaside or countryside with arranged transport and if you are able to use it, public transport is easily accessible. We use a reliable and friendly taxi service if you prefer to travel that way.



“

My Mother has been in Nightingale for approx 15 months. I can honestly say it has been a 'god send'. She has settled in really well and received exceptional care. From the manager to all carers and office staff, everyone is friendly and welcoming. Activities are varied and there is a great atmosphere. The choice of menu is good and the chef is so accommodating. Would have no hesitation in recommending Nightingale.

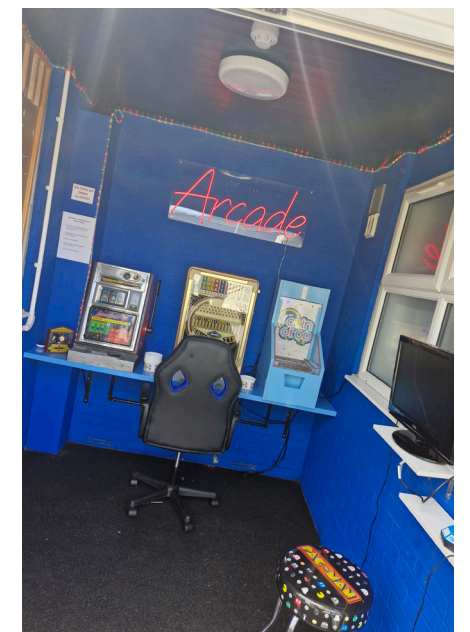
Daughter of Resident | March 2025

Your Service



Dining and Cuisine

Nightingale is well known for its superb restaurant reputation. Our cook's marvellous culinary skills translate into delectable gourmet meals every day of the week. We offer an extensive, nutritious menu providing variety and choices, according to your preferences. Meals are served in our elegant restaurant style dining room and are always appetising and well presented. You may dine in your own room if you wish and can expect your meal to be hot, tasty and beautifully served. Assistance is always on hand at mealtimes for those who require it. Visitors who pre-book are welcome to join us for meals and we are happy to incorporate new suggestions into our menu. Snacks and hot or cold drinks are available throughout the day. Alcohol is served with the evening meal



Fantastic well kept care home. Spotlessly clean with no smells at all.
All the staff we met were great with all the residents and dealt with them with patience and kindness. The assistant manageress was particularly helpful.
Would recommend this home to anybody.

Brother of Resident | April 2024



My dad is so happy and content at Nightingale. His physical health and well-being has improved immensely. He thinks he's in a five-star hotel. The staff are so helpful. Nothing is too much trouble. Even management is hands-on. There is always entertainment and activities which are inclusive to all of us. Recently, my mom passed, and all the staff stepped up for both my dad and me. I could never thank them enough. Knowing my dad is safe and happy is good.

Son of Resident | January 2024



Our Promise

Nightingale is not just a home, but a family too. Everyone is made to feel welcome and cared for, and we value each resident's individuality. There are few rules and timetables because we want our residents to feel like loved ones. Your privacy and confidentiality are ensured. Visitors are welcome at all times and we relish your furry friends too!



Very friendly and caring care home. Staff can't do enough for Mum and our family. Mum is treated as an individual, and everyone knows her little ways and quirks. She is clearly loved and cared for. There is always something happening at Nightingale, something for everyone. My mum doesn't join in with activities, so it was fantastic to hear that one day she was taken out for lunch at a local farm.

Daughter of Resident | January 2024



Statement of Purpose

Nightingale produces a Statement of Purpose, which is regularly reviewed and can be read by anyone who's interested. The Care Quality Commission inspects the home regularly to ensure it complies with Care Standards. Please feel free to speak to the manager at any time. To view our CQC Report, visit <https://www.cqc.org.uk/location/1-124958747>.

Residents' and relatives' reviews can be found on:
<https://www.carehome.co.uk/carehome.cfm/searchazref/10004005NIGA>.





Looking forward to meeting you

info@nightingalecarehome.com • 01142 571 281

www.nightingalecarehome.com

Nether Lane, Ecclesfield, Sheffield, S35 9ZX

